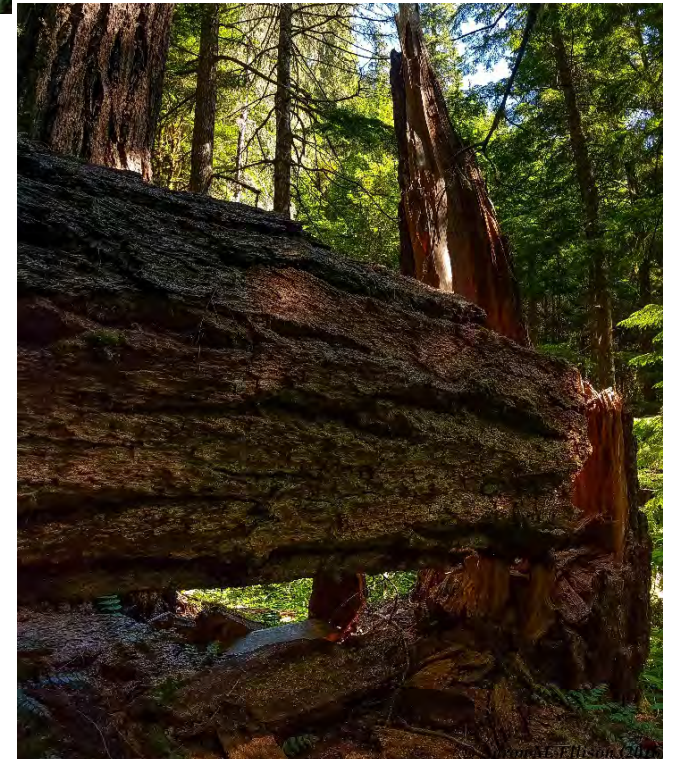


Crossing The Divide¹



It's been one too many switch-backs when
I don't know
whether
I'm
coming
or going and
I think the water's
flowing uphill.
A lonely raven
mocks my plight
while
the trail
beckons
beyond a shattered bridge.



¹Crossing from Watershed 2 to Watershed 3 at the H. J. Andrews Experimental Forest